

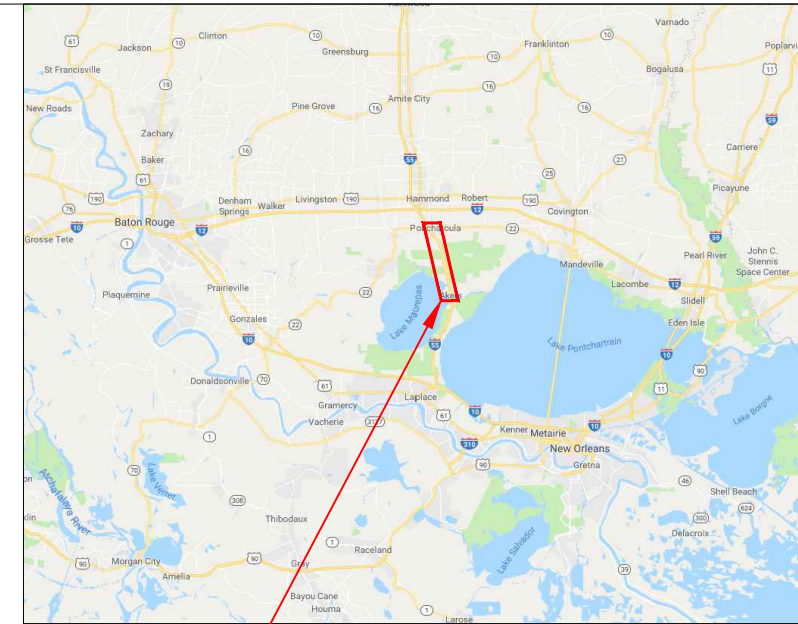
APPENDIX B:

Conceptual Design Drawings and
Cost Estimate for the Manchac Greenway
From Ponchatoula to Pass Manchac

INDEX OF SHEETS	
1	TITLE SHEET
2	OVERALL SITE PLAN
3a-3d	SITE PLAN SHEETS
4-5	TYPICAL SECTIONS

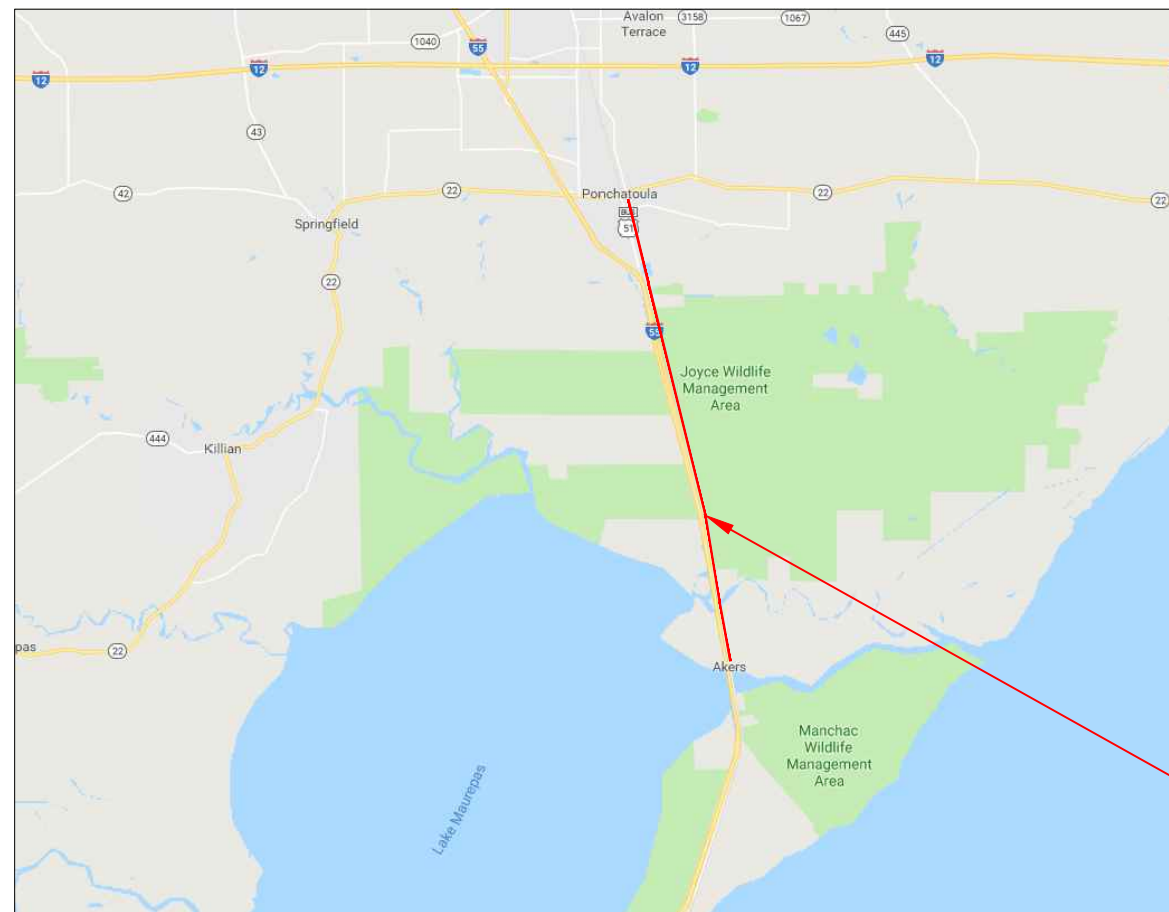
MANCHAC GREENWAY STUDY

A/E PROJECT NO. 20-1837



PROJECT LOCATION

LOCATION MAP



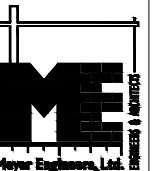
PROJECT LOCATION

LAYOUT MAP



project no. 20-1837
 drawn AS
 checked DHD
 date 04-22-2019
 revised

Meyer Engineers, Ltd.
 4937 Hearst Street, Suite 1B, Metairie, Louisiana 70001
 phone.504.885.9892 . fax.504.887-5056
 website.www.meyer-e-l.com



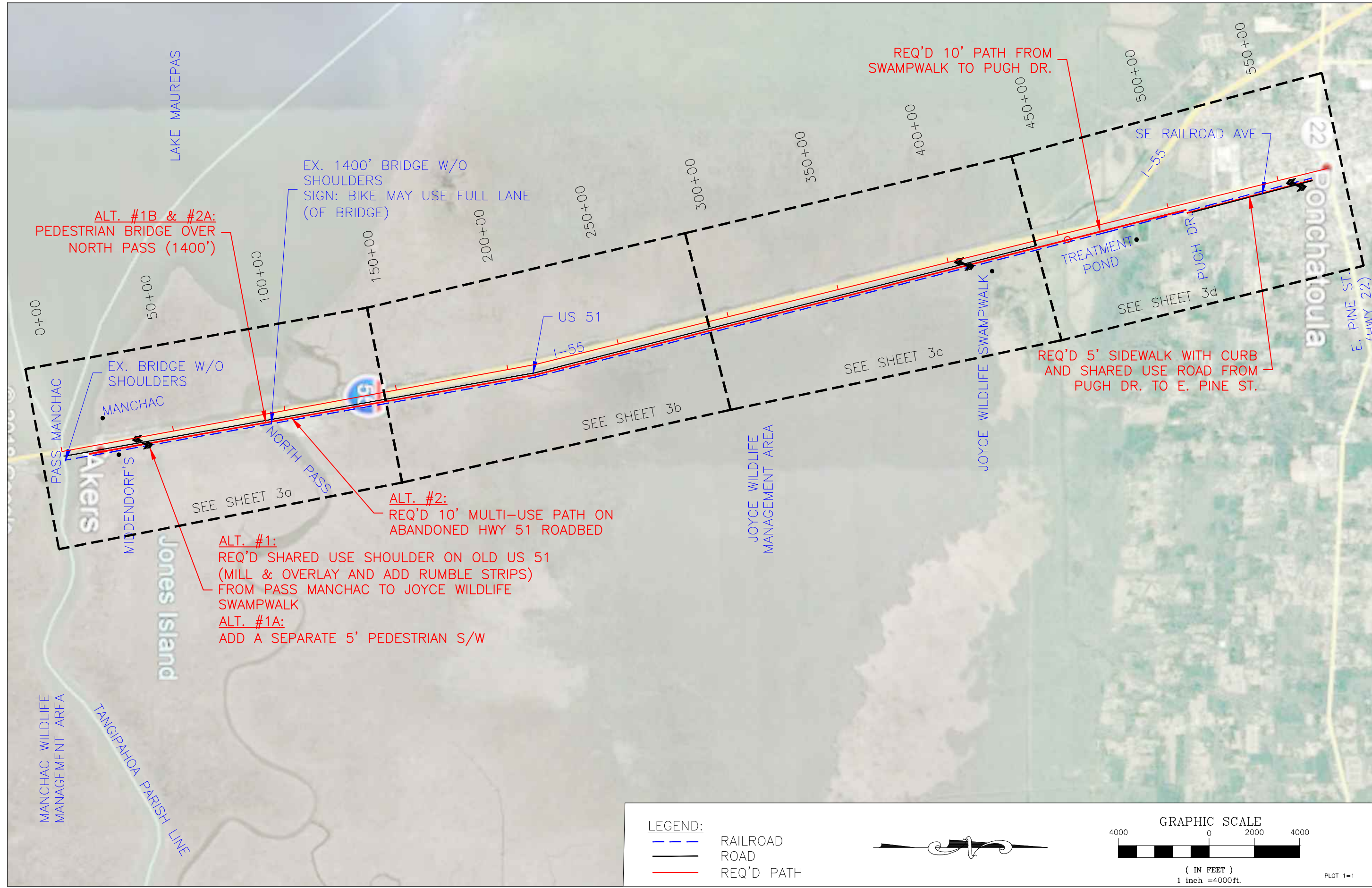
TITLE SHEET
MANCHAC GREENWAY STUDY
TANGIPAHOA PARISH

sheet no.

1

of sheets

project no. 20-1837
 drawn AJS
 checked DHD
 date 04-22-2019
 revised



ALT. #1B & #2A:
 PEDESTRIAN BRIDGE OVER
 NORTH PASS (1400')

EX. 1400' BRIDGE W/O
 SHOULDERS
 SIGN: BIKE MAY USE FULL LANE
 (OF BRIDGE)

REQ'D 10' PATH FROM
 SWAMPWALK TO PUGH DR.

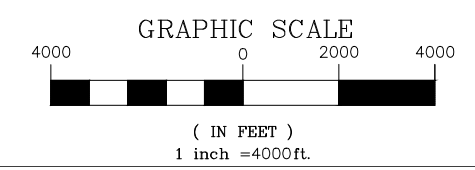
REQ'D 5' SIDEWALK WITH CURB
 AND SHARED USE ROAD FROM
 PUGH DR. TO E. PINE ST.

ALT. #1:
 REQ'D SHARED USE SHOULDER ON OLD US 51
 (MILL & OVERLAY AND ADD RUMBLE STRIPS)
 FROM PASS MANCHAC TO JOYCE WILDLIFE
 SWAMPWALK

ALT. #1A:
 ADD A SEPARATE 5' PEDESTRIAN S/W

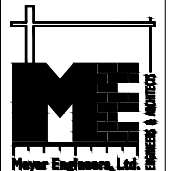
ALT. #2:
 REQ'D 10' MULTI-USE PATH ON
 ABANDONED HWY 51 ROADBED

LEGEND:
 --- RAILROAD
 --- ROAD
 --- REQ'D PATH



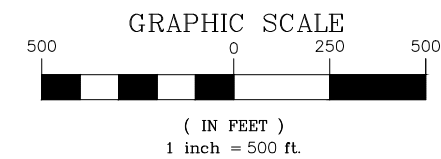
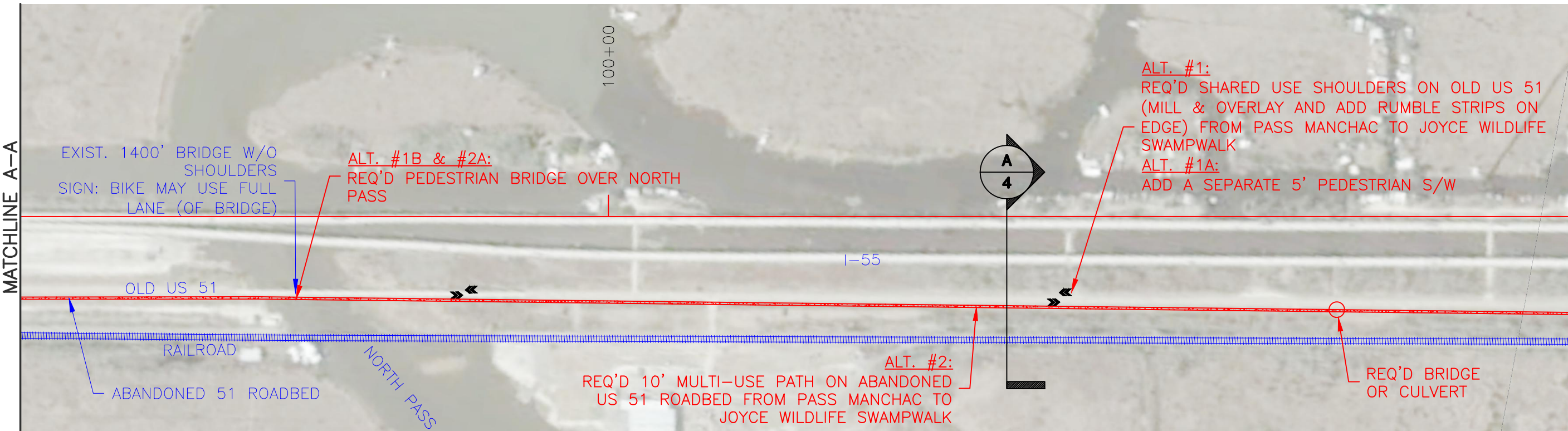
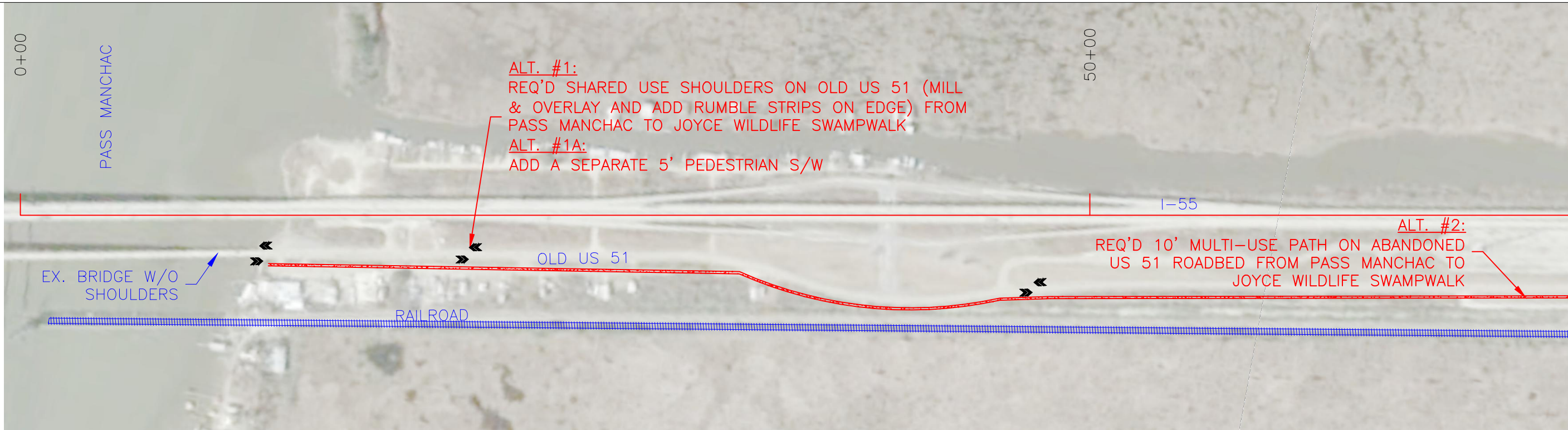
PLOT 1=1

Meyer Engineers, Ltd.
 4937 Hearst Street, Suite 1B · Metairie, Louisiana 70001
 phone: 504.885.9892 · fax: 504-887-5056
 website: www.meyer-e-l.com



OVERALL SITE PLAN
MANCHAC GREENWAY STUDY
TANGIPAHOA PARISH

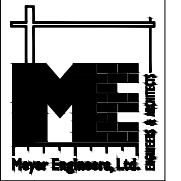
sheet no.
2
 of ___ sheets



PLOT 1=1

project no.	20-1837
drawn	AJS
checked	DHD
date	04-22-2019
revised	

Meyer Engineers, Ltd.
 4937 Hearst Street, Suite 1B, Metairie, Louisiana 70001
 phone: 504.885.9892 • fax: 504.887-5056
 website: www.meyer-e-l.com

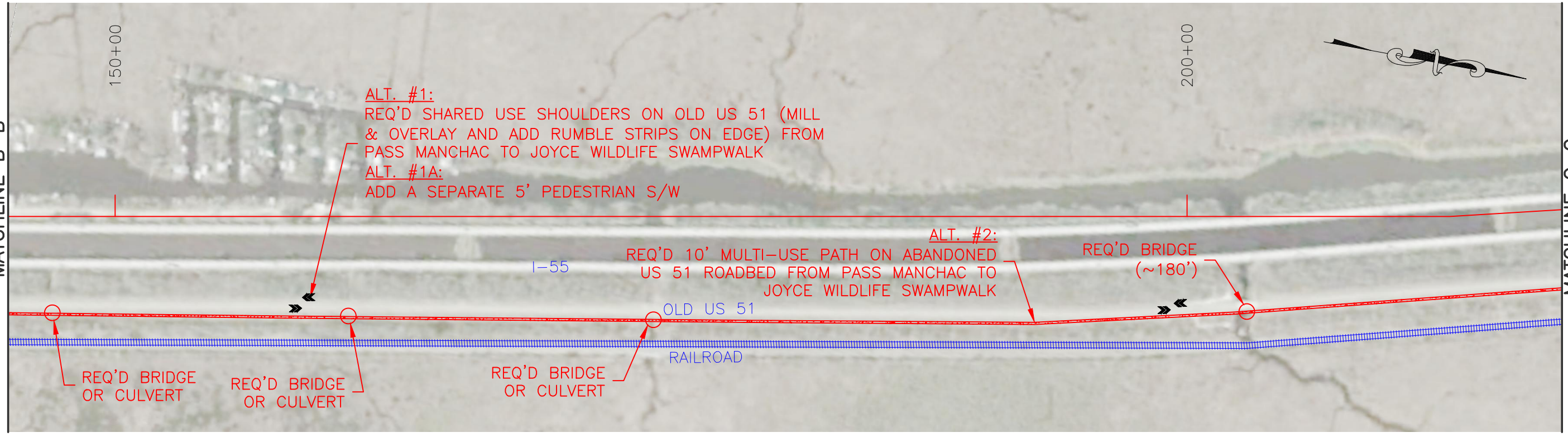


SITE PLAN
MANCHAC GREENWAY STUDY
TANGIPAHOA PARISH

sheet no.
39
 of _____ sheets

project no. 20-1837
 drawn AJB
 checked DHD
 date 04-22-2019
 revised

MATCHLINE B-B



ALT. #1:
 REQ'D SHARED USE SHOULDERS ON OLD US 51 (MILL & OVERLAY AND ADD RUMBLE STRIPS ON EDGE) FROM PASS MANCHAC TO JOYCE WILDLIFE SWAMPWALK
ALT. #1A:
 ADD A SEPARATE 5' PEDESTRIAN S/W

ALT. #2:
 REQ'D 10' MULTI-USE PATH ON ABANDONED US 51 ROADBED FROM PASS MANCHAC TO JOYCE WILDLIFE SWAMPWALK

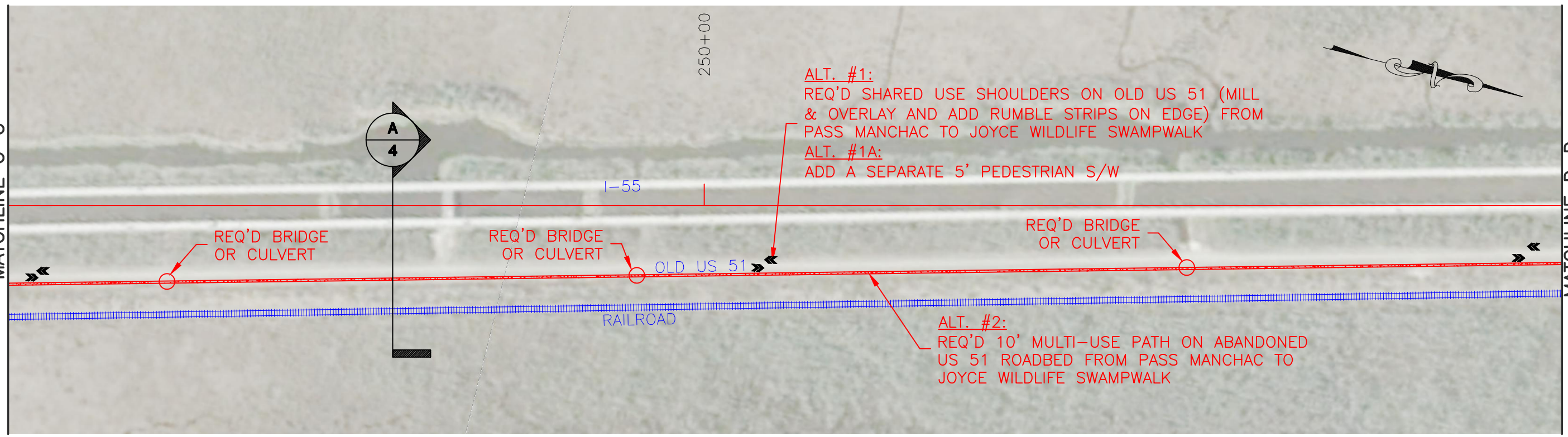
REQ'D BRIDGE (~180')

REQ'D BRIDGE OR CULVERT

REQ'D BRIDGE OR CULVERT

REQ'D BRIDGE OR CULVERT

MATCHLINE C-C



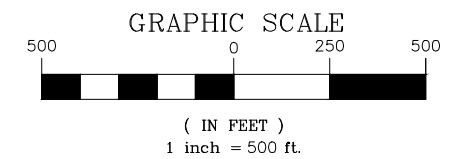
ALT. #1:
 REQ'D SHARED USE SHOULDERS ON OLD US 51 (MILL & OVERLAY AND ADD RUMBLE STRIPS ON EDGE) FROM PASS MANCHAC TO JOYCE WILDLIFE SWAMPWALK
ALT. #1A:
 ADD A SEPARATE 5' PEDESTRIAN S/W

ALT. #2:
 REQ'D 10' MULTI-USE PATH ON ABANDONED US 51 ROADBED FROM PASS MANCHAC TO JOYCE WILDLIFE SWAMPWALK

REQ'D BRIDGE OR CULVERT

REQ'D BRIDGE OR CULVERT

REQ'D BRIDGE OR CULVERT



MATCHLINE C-C

MATCHLINE D-D

Meyer Engineers, Ltd.
 4937 Hearst Street, Suite 1B, Metairie, Louisiana 70001
 phone: 504.885.9892 . fax: 504-887-5056
 website: www.meyer-e-l.com



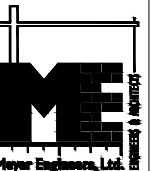
SITE PLAN
MANCHAC GREENWAY STUDY
TANGIPAHOA PARISH

sheet no.
3b
 of sheets

PLOT 1=1

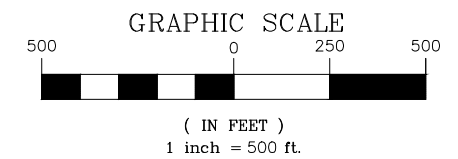
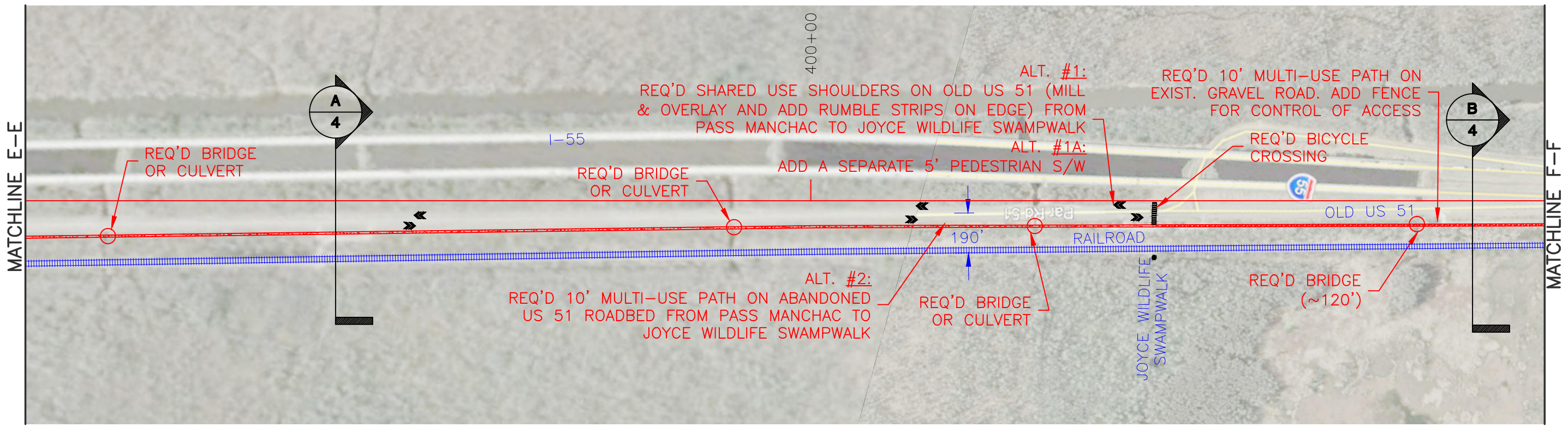
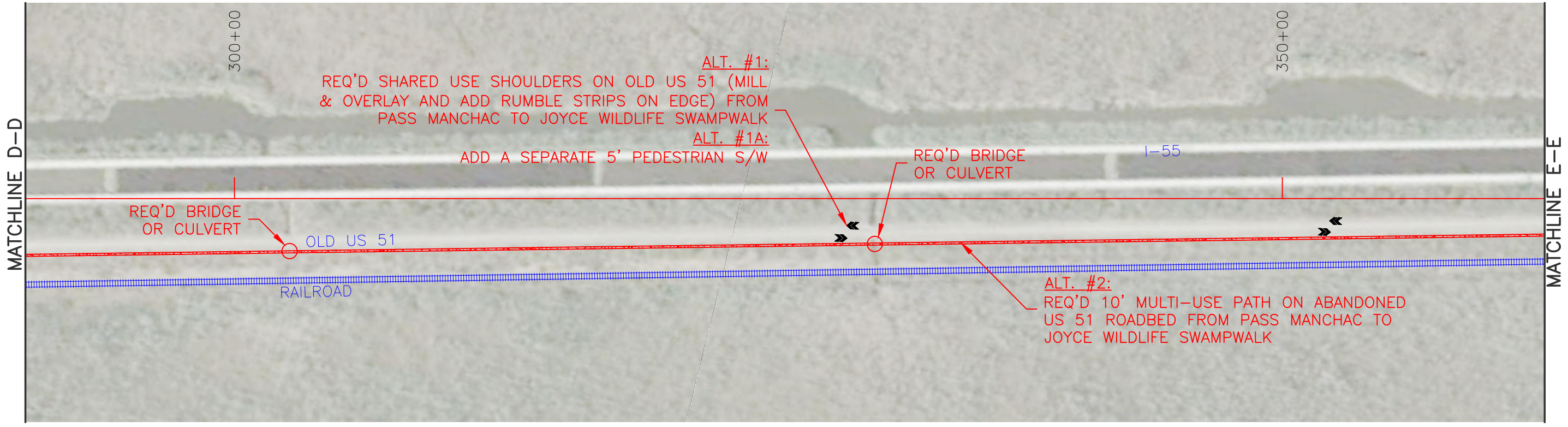
project no. 20-1837
 drawn AJS
 checked DHD
 date 04-22-2019
 revised

Meyer Engineers, Ltd.
 4937 Hearst Street, Suite 1B, Metairie, Louisiana 70001
 phone: 504.885.9892 • fax: 504-887-5056
 website: www.meyer-e-l.com



SITE PLAN
MANCHAC GREENWAY STUDY
TANGIPAHOA PARISH

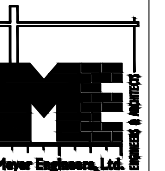
sheet no.
3C
 of _____ sheets



PLOT 1=1

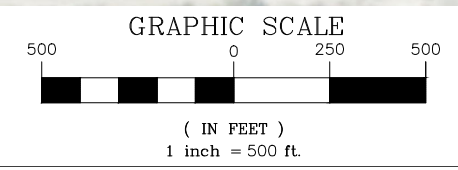
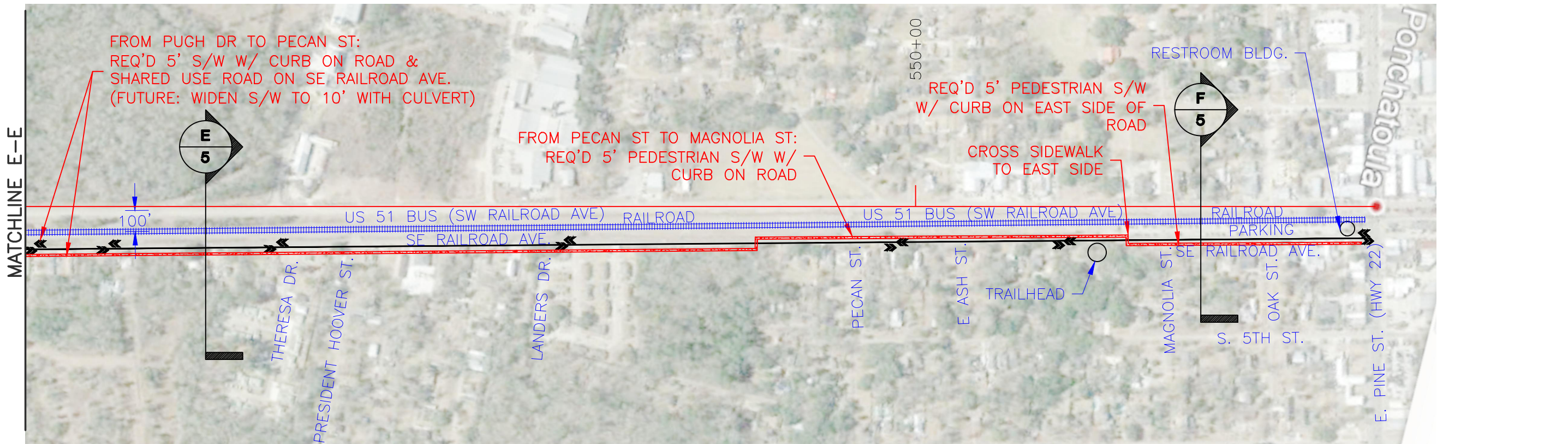
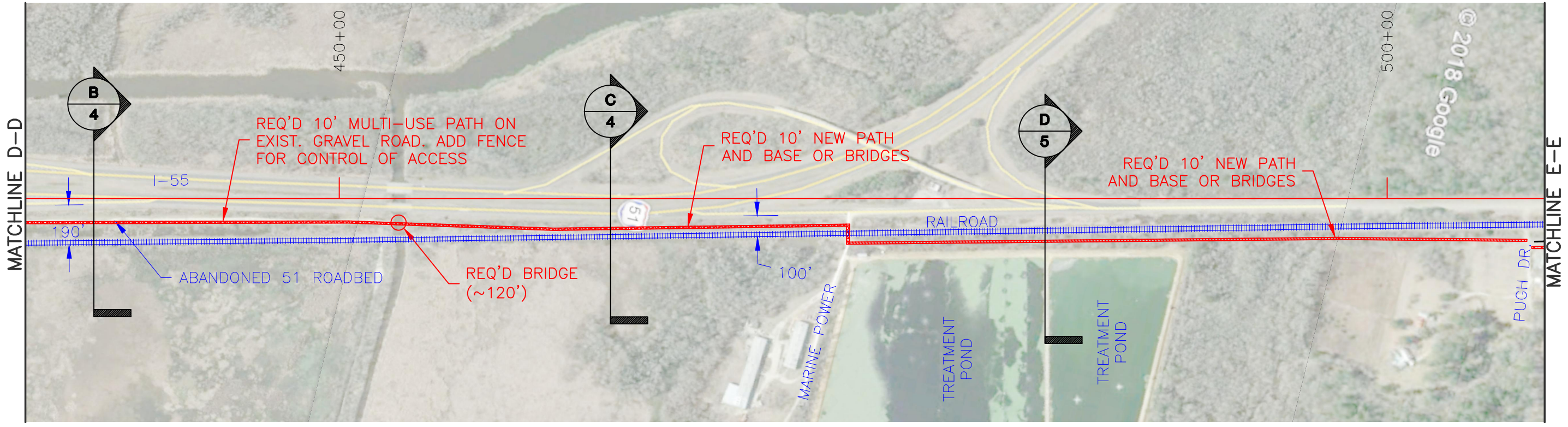
project no. 20-1837
 drawn AJG
 checked DHD
 date 04-22-2019
 revised

Meyer Engineers, Ltd.
 4937 Hearst Street, Suite 1B, Metairie, Louisiana 70001
 phone: 504.885.9892 • fax: 504.887-5056
 website: www.meyer-e-l.com



SITE PLAN
MANCHAC GREENWAY STUDY
TANGIPAHOA PARISH

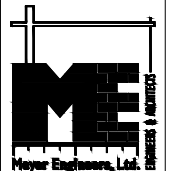
sheet no.
3
 of sheets



PLOT 1=1

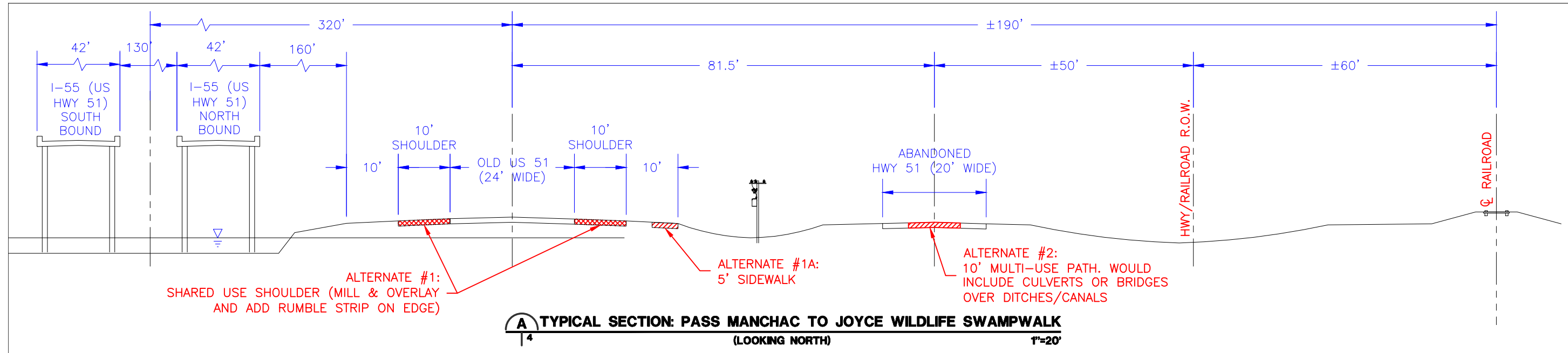
project no. 20-1837
 drawn: AJS
 checked: DHD
 date: 04-22-2019
 revised:

Meyer Engineers, Ltd.
 4937 Hearst Street, Suite 1B, Metairie, Louisiana 70001
 phone: 504.885.9892 . fax: 504-887-5056
 website: www.meyer-e-l.com

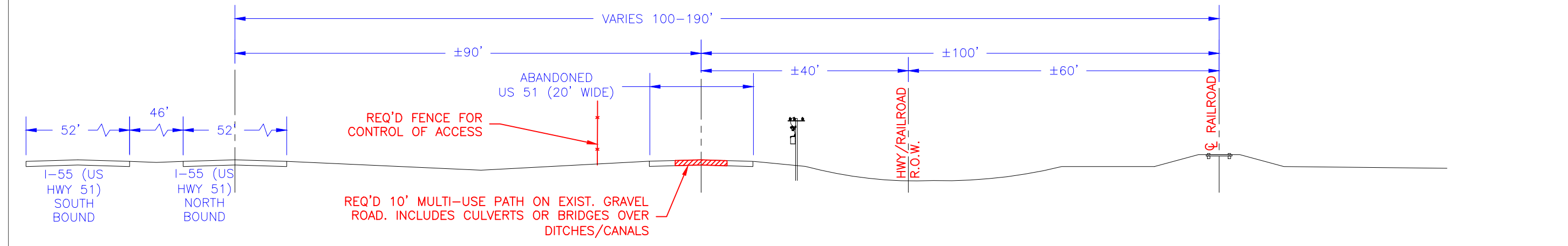


TYPICAL SECTION
MANCHAC GREENWAY STUDY
TANGIPAHOA PARISH

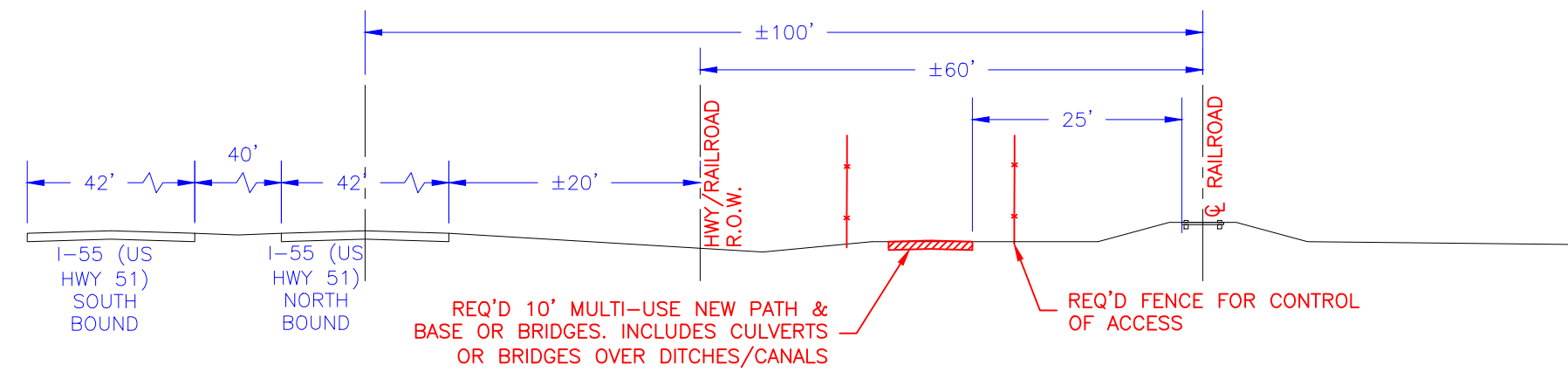
sheet no.
4
 of sheets



A TYPICAL SECTION: PASS MANCHAC TO JOYCE WILDLIFE SWAMPWALK
 (LOOKING NORTH) 1"=20'

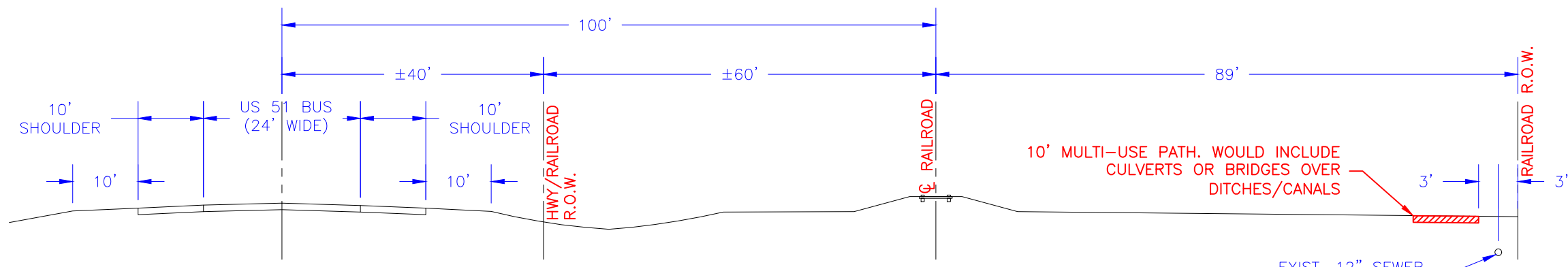


B TYPICAL SECTION: JOYCE WILDLIFE SWAMPWALK TO INTERSTATE LOOP
 (LOOKING NORTH) 1"=20'

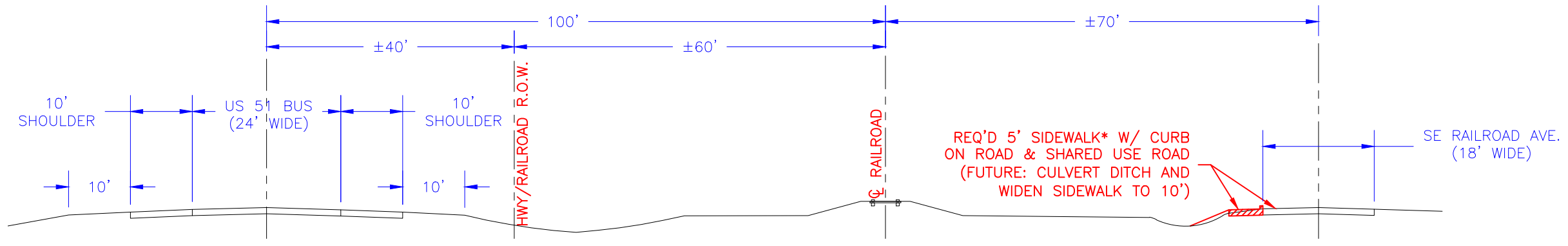


C TYPICAL SECTION: INTERSTATE LOOP TO TREATMENT POND
 (LOOKING NORTH) 1"=20'

project no. 20-1837
 drawn AJS
 checked DHD
 date 04-22-2019
 revised

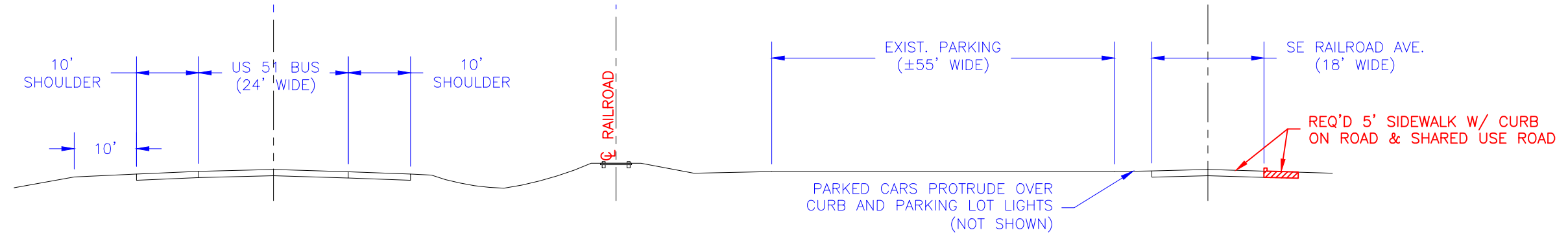


D
 TYPICAL SECTION: TREATMENT POND TO PUGH DRIVE
 (LOOKING NORTH) 1"=20'



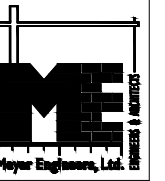
E
 TYPICAL SECTION: PUGH DR. TO NEAR MAGNOLIA ST.
 (LOOKING NORTH) 1"=20'

*NOTE: SIDEWALK TO BE CONSTRUCTED ON EAST SIDE OF SE RAILROAD AVE. FROM PUGH TO NEAR PECAN.



F
 TYPICAL SECTION: NEAR MAGNOLIA ST. TO PINE ST.
 (LOOKING NORTH) 1"=20'

Meyer Engineers, Ltd.
 4937 Hearst Street, Suite 1B, Metairie, Louisiana 70001
 phone: 504.885.9892 · fax: 504-887-5056
 website: www.meyer-e-l.com



TYPICAL SECTION
MANCHAC GREENWAY STUDY
TANGIPAHOA PARISH

sheet no.
5
 of sheets

PRELIMINARY PROBABLE CONSTRUCTION COST
 MANCHAC GREENWAY STUDY
 A/E PROJECT NO. 20-1837 APRIL 22, 2019

					<u>ALTERNATE #1</u>	<u>ALTERNATE #2</u>
<u>PASS MANCHAC TO THE JOYCE WILDLIFE SWAMP WALK (40,000 LF)</u>						
<u>ALTERNATE #1: SHARED USE SHOULDERS ON OLD US 51</u>						
MILL 2" OF ASPHALT (38,600' X 20')	86,000 SY	@	\$3	\$258,000		
ASPHALT 2" (W/RUMBLE STRIPS)	86,000 SY	@	\$14	\$1,204,000		
BASE REPAIR (5% OF 86,000 SY)	4,300 SY	@	\$300	<u>\$1,290,000</u>		
SUBTOTAL - ALTERNATE #1						\$2,752,000
<u>ALTERNATE #1A: ADD CONCRETE SIDEWALK</u>						
CONCRETE SIDEWALK (4") ON EX. GRADE (38,600' X 5')	21,500 SY	@	\$85	<u>\$1,827,500</u>		
SUBTOTAL ALTERNATE #1A						\$1,827,500
<u>ALTERNATE #1B: PEDESTRIAN BRIDGE OVER NORTH PASS</u>						
PEDESTRIAN BRIDGE (STEEL) (12' WIDE)	1,400 LF	@	\$2,500	<u>\$3,500,000</u>		
SUBTOTAL ALTERNATE 1B						<u>\$3,500,000</u>
TOTAL PROJECT COSTS - ALTERNATES 1-1B						\$8,079,500
<u>ALTERNATE #2: 10' PATH ON ABANDONED 51 ROAD BED</u>						
CLEARING (38,600' X 14')	1 LS	@	\$70,000	\$70,000		
ASPHALT 3" (34,500' X 10')	38,000 SY	@	\$20	\$760,000		
BASE REPAIR (20% OF 38,000 SY)	7,600 SY	@	\$300	\$2,280,000		
RESHAPE BASE	38,000 SY	@	\$4	\$152,000		
NEW PATH AND BASE 2,000' NORTH OF PASS MANCHAC (ALONG CURVE)	1,000 LF	@	\$300	\$300,000		
BRIDGE AT CURVE	500 LF	@	\$2,200	\$1,100,000		
BRIDGE 11,000' NORTH OF NORTH PASS (180' X 14')	1 EA	@	\$390,000	\$390,000		
SMALL WOODEN BRIDGES (OVER CULVERTS) AT DRAINAGE CANALS (60' X 14')	12 EA	@	\$130,000	<u>\$1,560,000</u>		
SUBTOTAL - ALTERNATE #2						\$6,612,000
<u>ALTERNATE #2A: PEDESTRIAN BRIDGE OVER NORTH PASS</u>						
PEDESTRIAN BRIDGE (STEEL) (12' WIDE)	1,400 LF	@	\$2,500	<u>\$3,500,000</u>		
SUBTOTAL ALTERNATE 2A						<u>\$3,500,000</u>
TOTAL PROJECT COSTS - ALTERNATES 2 & 2A						\$10,112,000
<u>JOYCE WILDLIFE SWAMP WALK TO TREATMENT POND (6,000')</u>						
<u>10' PATH BETWEEN R/R AND US 51/I-55</u>						
CLEARING (3,000' X 14')	1 LS	@	\$10,000	\$10,000		
ASPHALT 3" OVERLAY (3,900' X 10')	4,300 SY	@	\$20	\$86,000		
BASE REPAIR (20% OF 4,300 SY)	860 SY	@	\$300	\$258,000		
RESHAPE BASE	4,300 SY	@	\$4	\$17,200		
NEW PATH AND BASE	2,000 LF	@	\$300	\$600,000		
BRIDGES (120' X 14')	2 EA	@	\$260,000	<u>\$520,000</u>		
TOTAL JOYCE WILDLIFE SWAMP WALK TO TREATMENT POND (6,000')						\$1,491,200
<u>TREATMENT POND TO PUGH DRIVE (3,300')</u>						
NEW PATH AND BASE	3,300 LF	@	\$300	\$990,000		
SMALL WOODEN BRIDGES (OVER CULVERTS) AT DRAINAGE CANALS (60' X 14')	2 EA	@	\$130,000	<u>\$260,000</u>		
TOTAL TREATMENT POND TO PUGH DRIVE (3,300')						\$1,250,000
<u>PUGH DRIVE TO E. PINE STREET (6,500')</u>						
CONCRETE SIDEWALK (6,500' X 5')	3,600 SY	@	\$85	\$306,000		
CONCRETE CURB	6,500 LF	@	\$25	\$162,500		
CULVERTS AT MINIMAL LOCATIONS	600 LF	@	\$150	\$90,000		
STRIPING	1 LS	@	\$10,000	<u>\$10,000</u>		
TOTAL PUGH DRIVE TO E. PINE STREET (6,500')						<u>\$568,500</u>
TOTAL PASS MANCHAC TO E. PINE STREET WITH ALTERNATE NO. 1						\$11,389,200
TOTAL PASS MANCHAC TO E. PINE STREET WITH ALTERNATE NO. 2						\$13,421,700

NOTE: ALL COSTS INCLUDE AN EXTRA 40% FOR MOBILIZATION, TRAFFIC CONTROLS, LAYOUT, SIGNAGE, STRIPING, CONSTRUCTION CONTINGENCIES, ENGINEERING, SURVEYING AND INSPECTION.